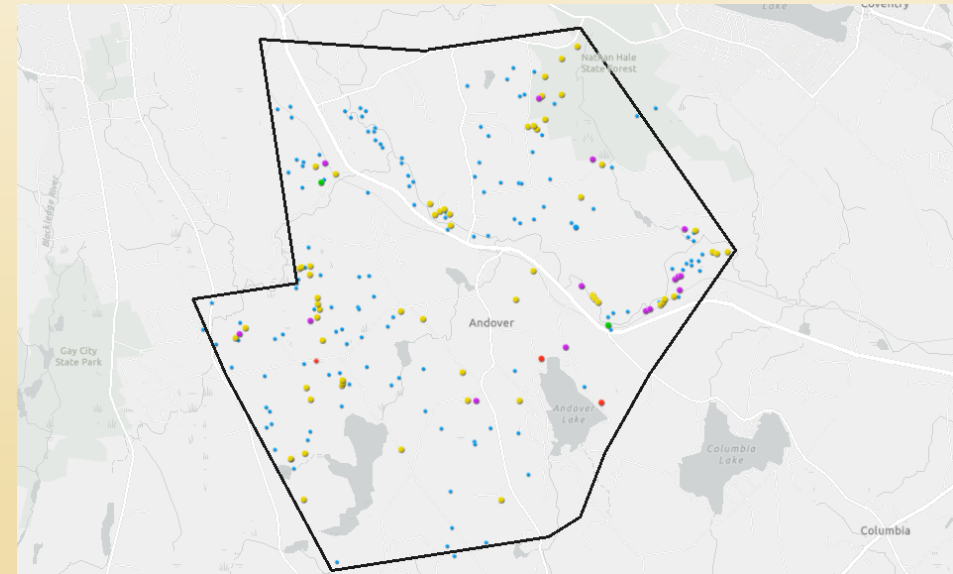
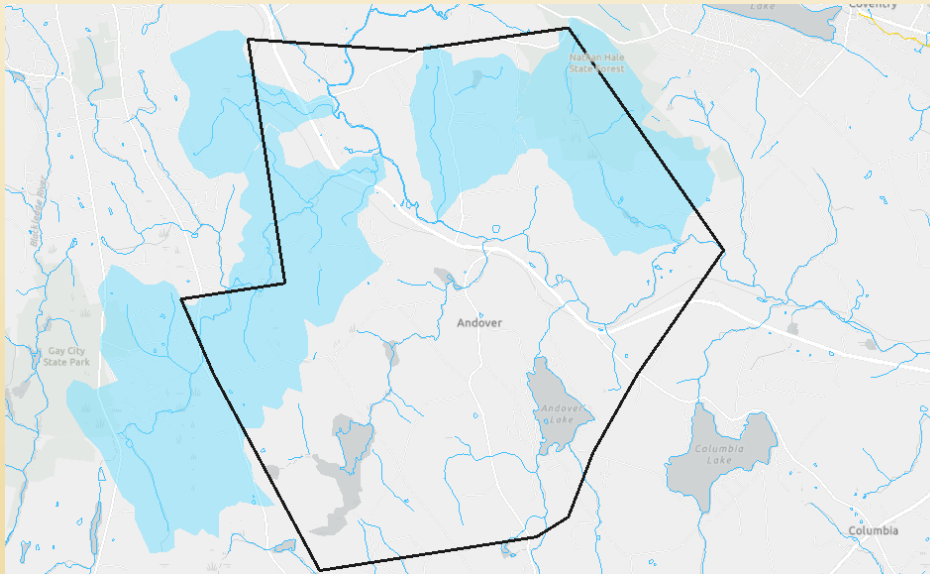


# Conducting Natural Resource Inventories

---



Hank Gruner, Member Andover Conservation Commission,  
[grunerhank@gmail.com](mailto:grunerhank@gmail.com)

# The NRI in Context

---

- ✓ What important natural resources occur in town and where do they occur?
- ✓ What open space do we have and where is it located?
- ✓ How do natural resources and existing open space align?
- ✓ How is open space being used, and how well is it protected?
- ✓ What are the priorities for open space and natural resource conservation?
- ✓ How do we move forward to achieve these goals?

# Natural Resource Inventory: Planning Considerations

## ✓ Staffing and systems (GIS)

- Scaling to municipal capacity
- Commission and consultant/technical/scientific support roles

## ✓ Data collection and mapping

- What already exists?
- What additional information do we need and at what level of detail (species-specific vs. ecosystem level)
- Open space analysis

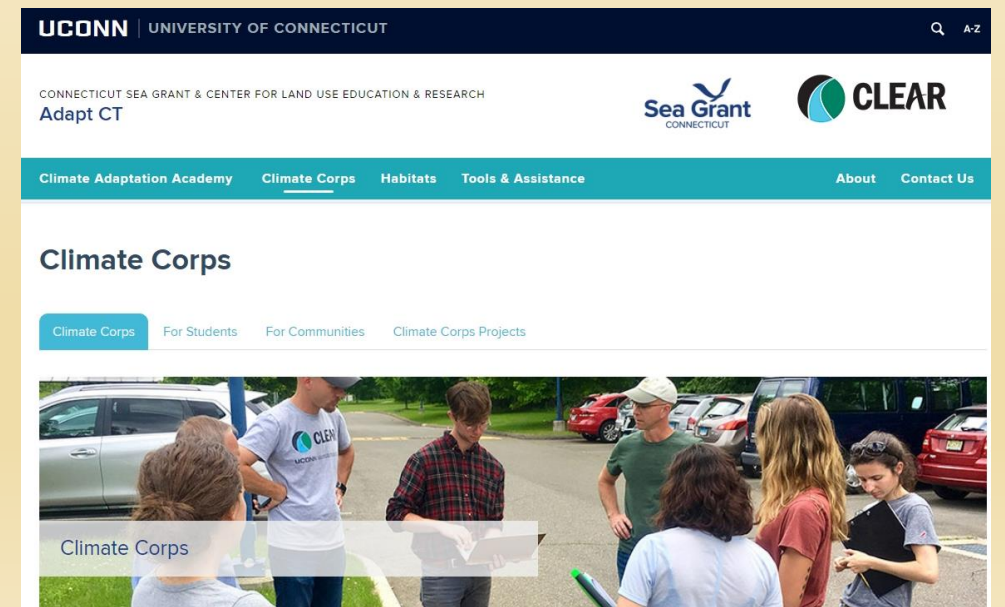
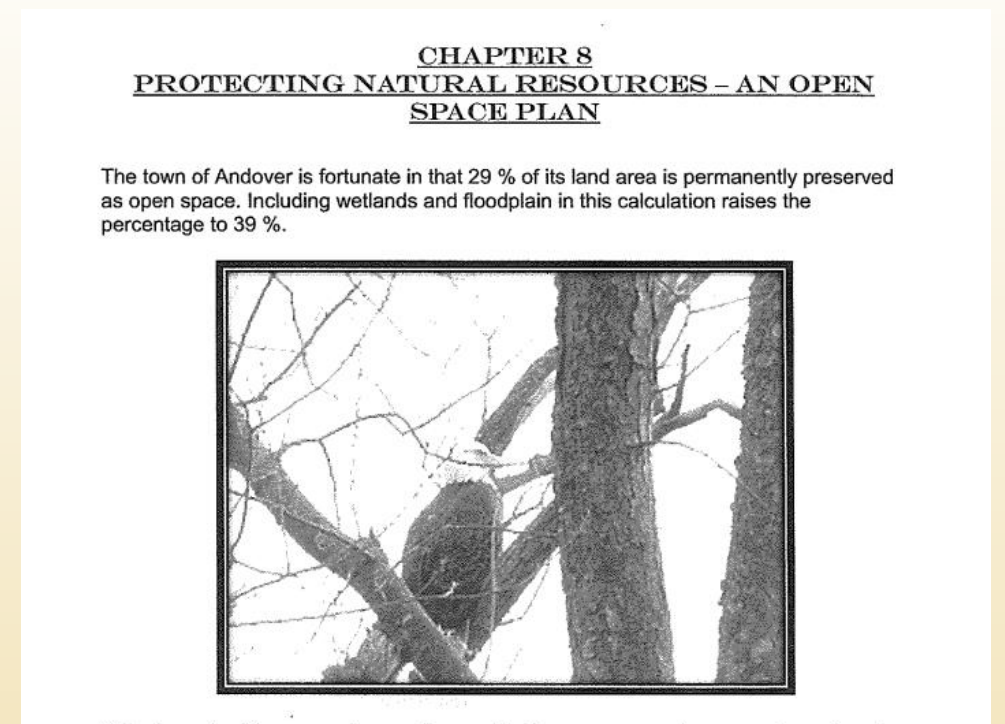
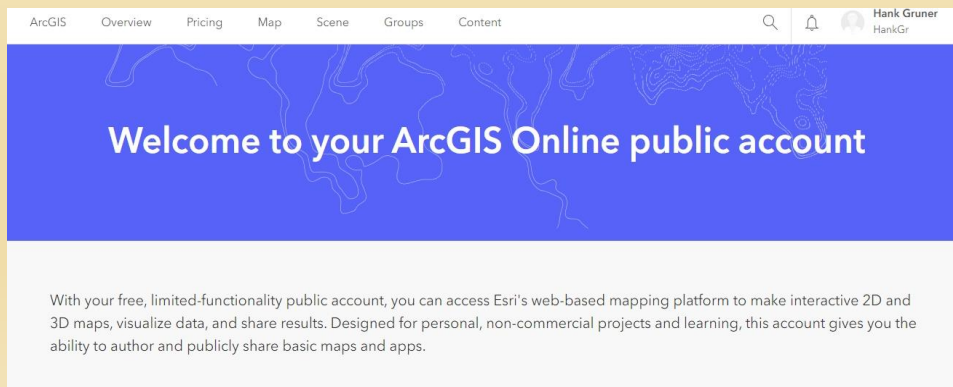
## ✓ Application

- Defining conservation goals
- Alignment with regional and state goals
- Alignment with POCD goals – identify potential areas of conflict
- Alignment with P&Z, IWWC regulations and review process
- Landowner engagement

# Andover NRI

## I. Staffing and Systems

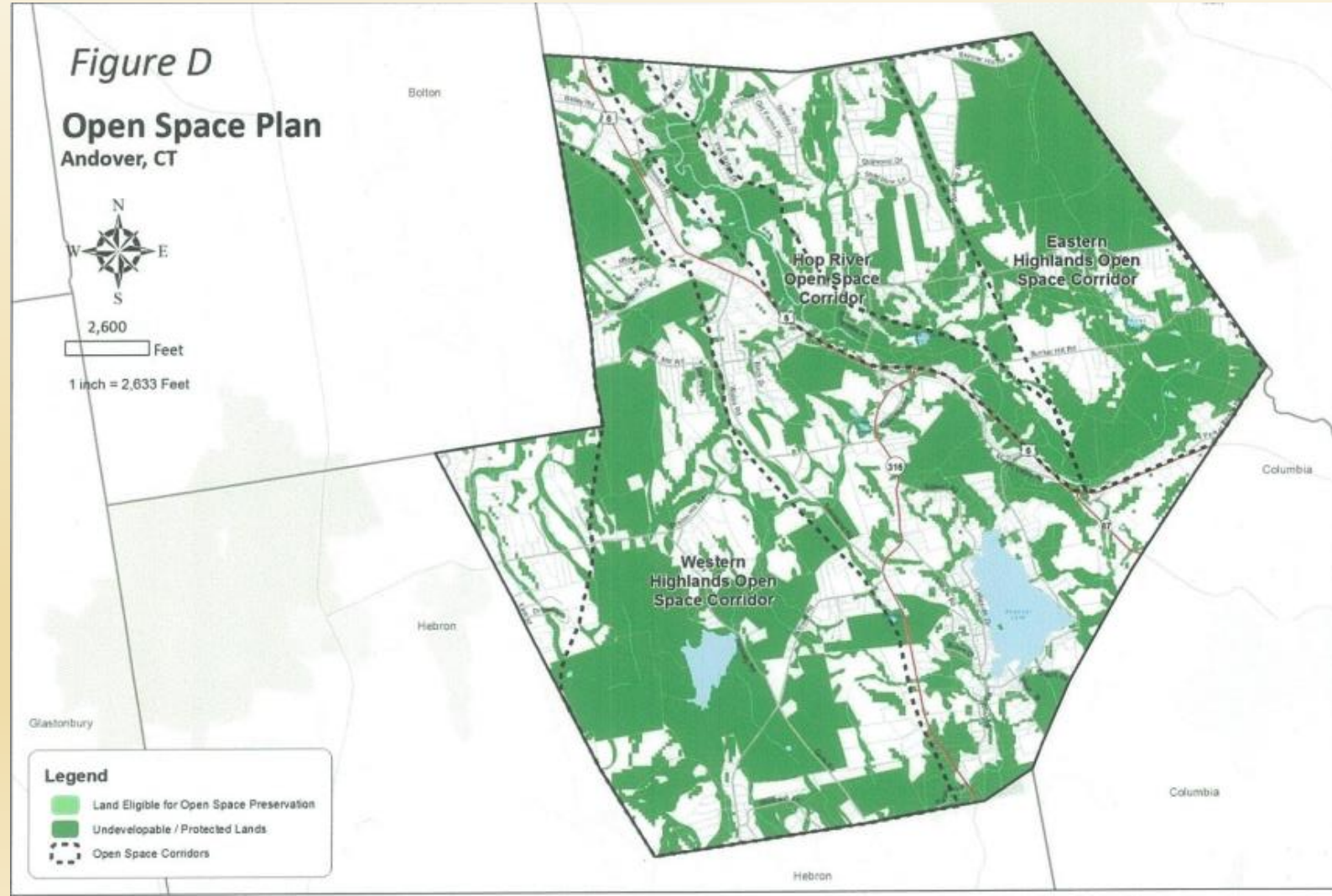
- Conservation Commission led as part of POCD revision (2025)
- Coordinate with P&Z and Town Planner
- ArcGIS public program as platform
- Support from UCONN Climate Corps



# Andover NRI

## II. Data Collection and Mapping: **What already exists?**

- Limited analysis completed in 2015  
(NDDDB, wetlands, farmland soils, steep slopes)
- Focused on prioritizing open space planning
- Conflicting open space parcel assessment
- Mapped three Open Space Corridors

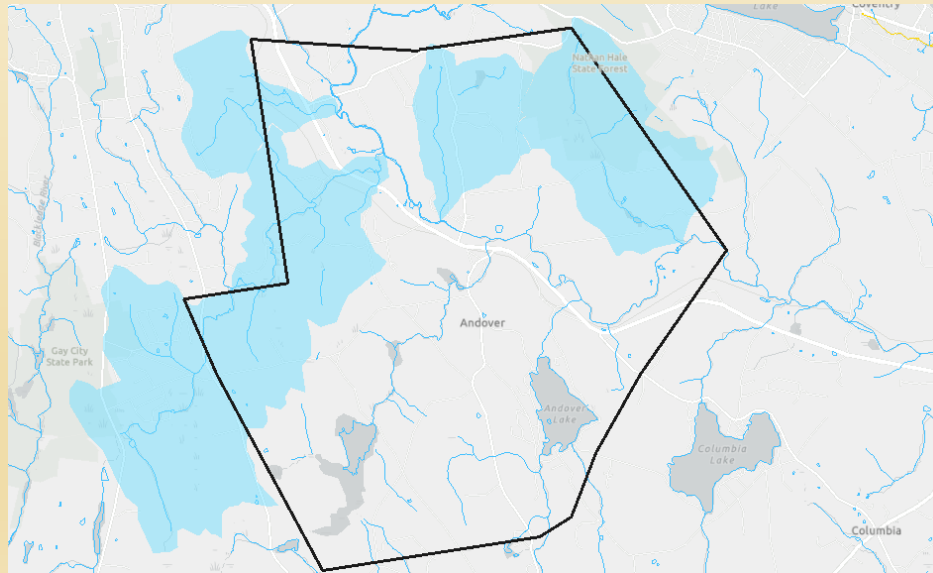




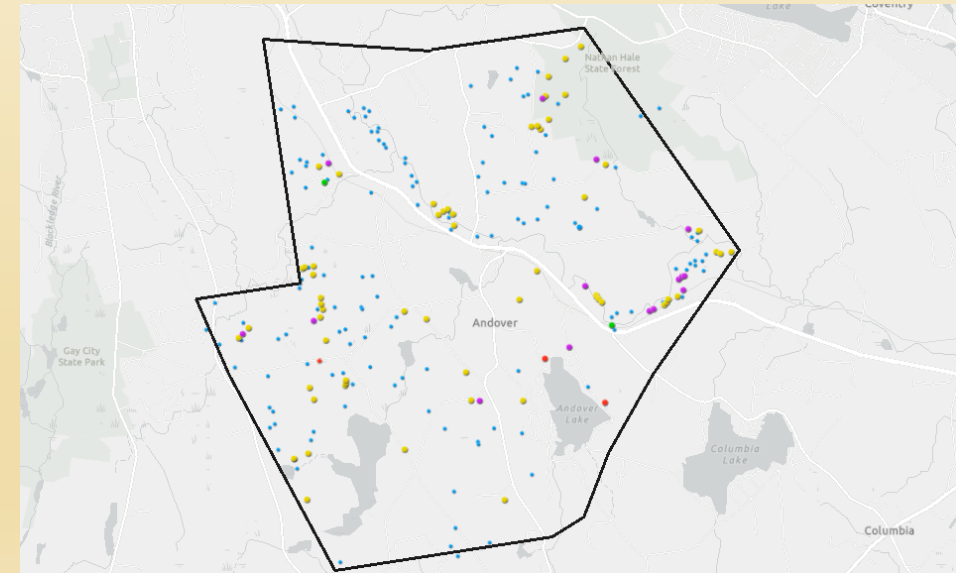
# Andover NRI

## II. Data Collection and Mapping: Mapping Level and Data

- Ecosystem level vs. species-specific
- CTECO, CTDEEP maps/data
- Vernal pool mapping/survey



Coldwater Streams-Basins

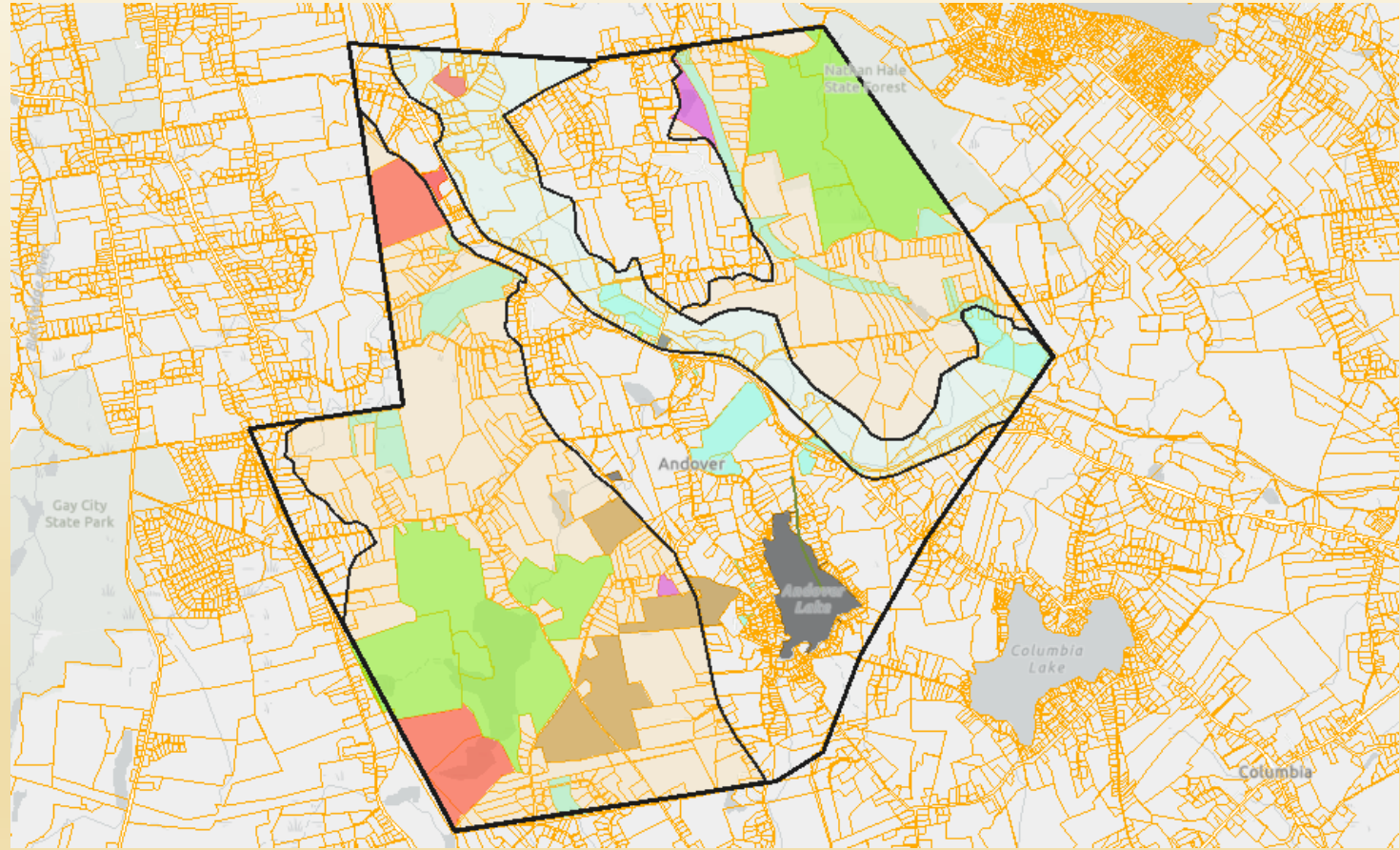


Confirmed and Potential Vernal Pools

# Andover NRI

## II. Data Collection and Mapping: **Open Space Analysis**

- Created dedicated open space parcel map
- Overlay alignment of natural resources with parcels



Open Space Corridors and Dedicated Open Space Parcels (Draft)

# Andover NRI

## III. Application: **Alignment with Regional and State Goals**

- CT GC3, Governor's Council on Climate Change (2021)
- CT Climate Change Preparedness Plan (2011)
- CT State Plan of Conservation and Development (2022)
- CT Wildlife Action Plan (2015: *the 2025 plan in process*)
- CRCOG Regional Plan of Conservation and Development (2024)



# Andover NRI

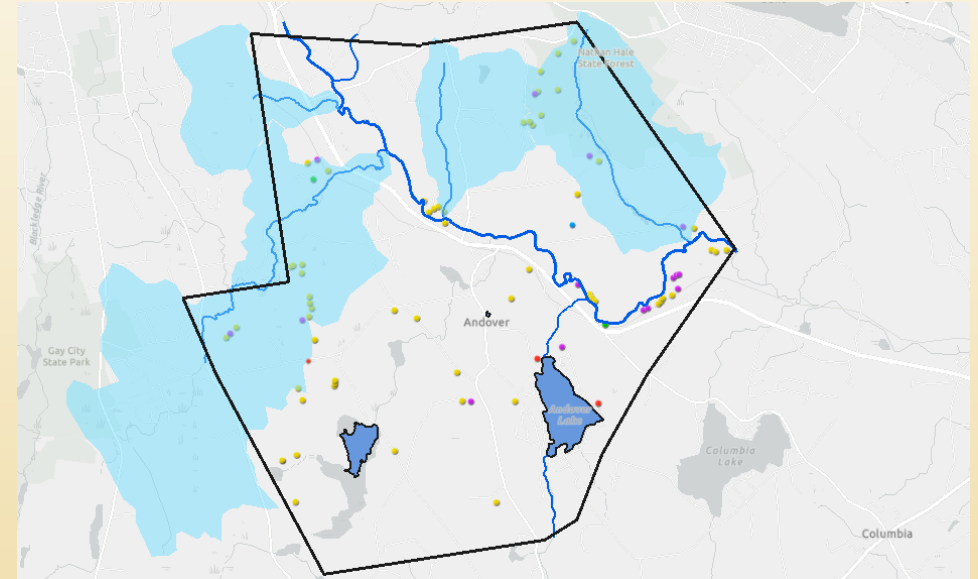
## III. Application: **Defining Goals and Alignment with POCD**

- Protect our natural resources: clean air, water, soil, and a diversity of native animals and plants - \* further goals specific to each resource drafted
- Aggregate tracts of land to create large, intact conservation areas
- Promote connectivity of open space parcels within open space corridors
- Promote public awareness of natural resources and the value of open space
- Engage the community in conservation initiatives, and support recreational opportunities where appropriate

# Andover NRI

## III. Application: **Alignment with Land Use Policy and Regulations**

- Coordinate with IWWC on vernal pool mapping initiative
- Provide Wetlands Agent with access to vernal pool map and supporting dataset
- Recommend amending Section 1.6 of IWWC regulations pertaining to identified “Areas of Special Concern” to include cold water stream systems and vernal pools
- Recommend a review of the adequacy of upland review area distance in Section 2.26 pertaining to “Areas of Special Concern” to support conservation goals

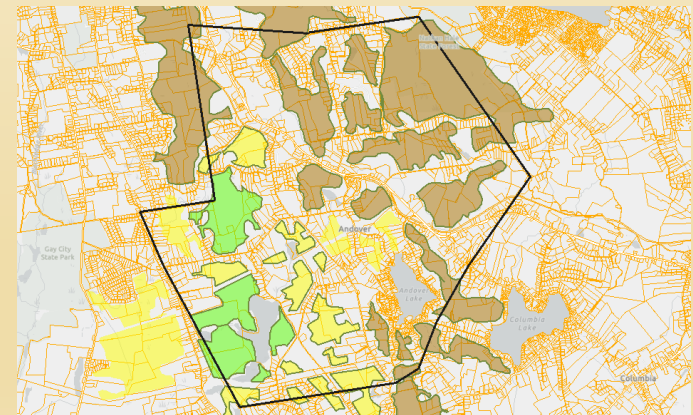


Priority Wetlands and Watercourses (Draft)

# Andover NRI

## III. Application: **Landowner Engagement**

- Recruiting and training Commission members and residents to assist with vernal pool surveys
- Outreach to landowners with forested parcels 10 acres or > to promote NRCS management programs



Core Forest Area